

Appendix 149 to
THE HISTORY OF SCOUTING IN SOUTH GEORGIA
(Appendix Updated on: November 6, 2021)

CAMP ROBERTS

Camp Roberts was the Alapaha Area Council camp prior to the opening of Camp Patten in the mid-1960s.



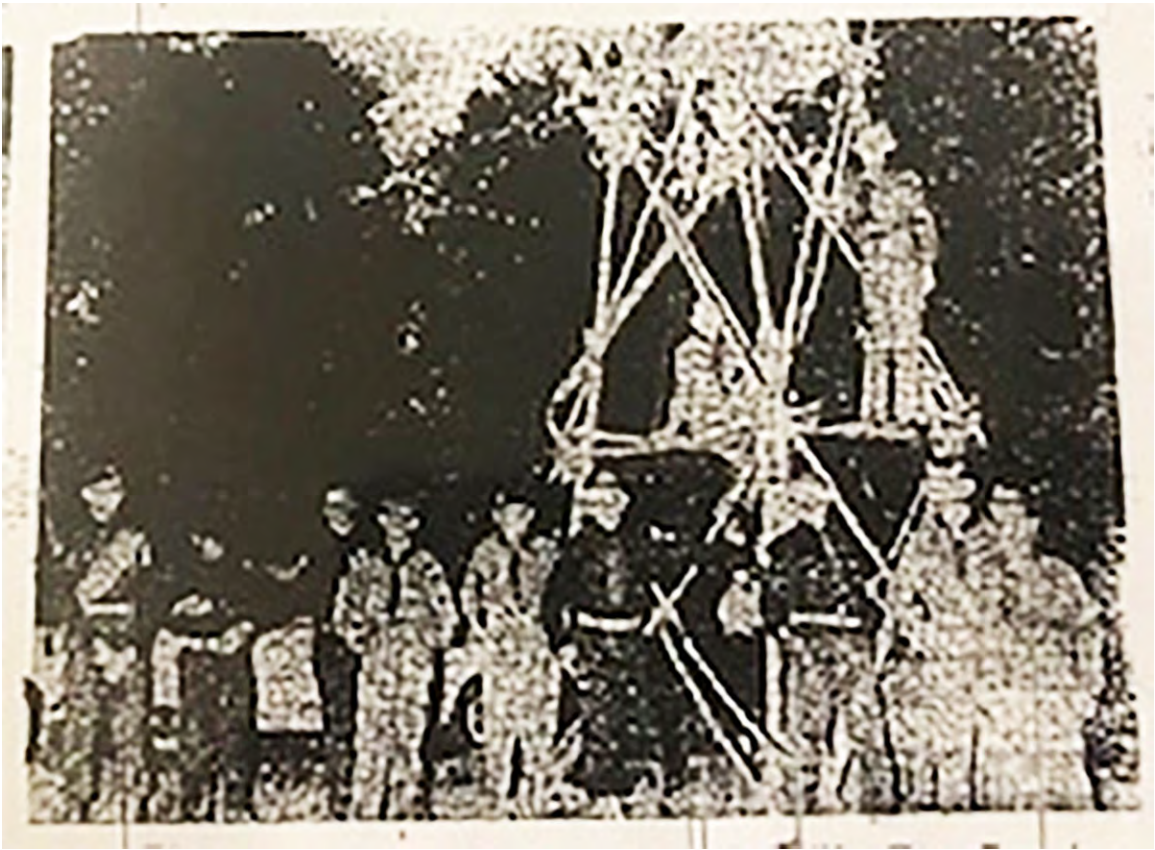
The only know patch from Camp Roberts



**Google map of Camp Robert in 2021
(Exact boundaries are unknown)**



**Google map of Camp Robert in 1993
(Exact boundaries are unknown)**



Climbing Tower in 1955



Barracks in 1955



Dining Hall in 1955